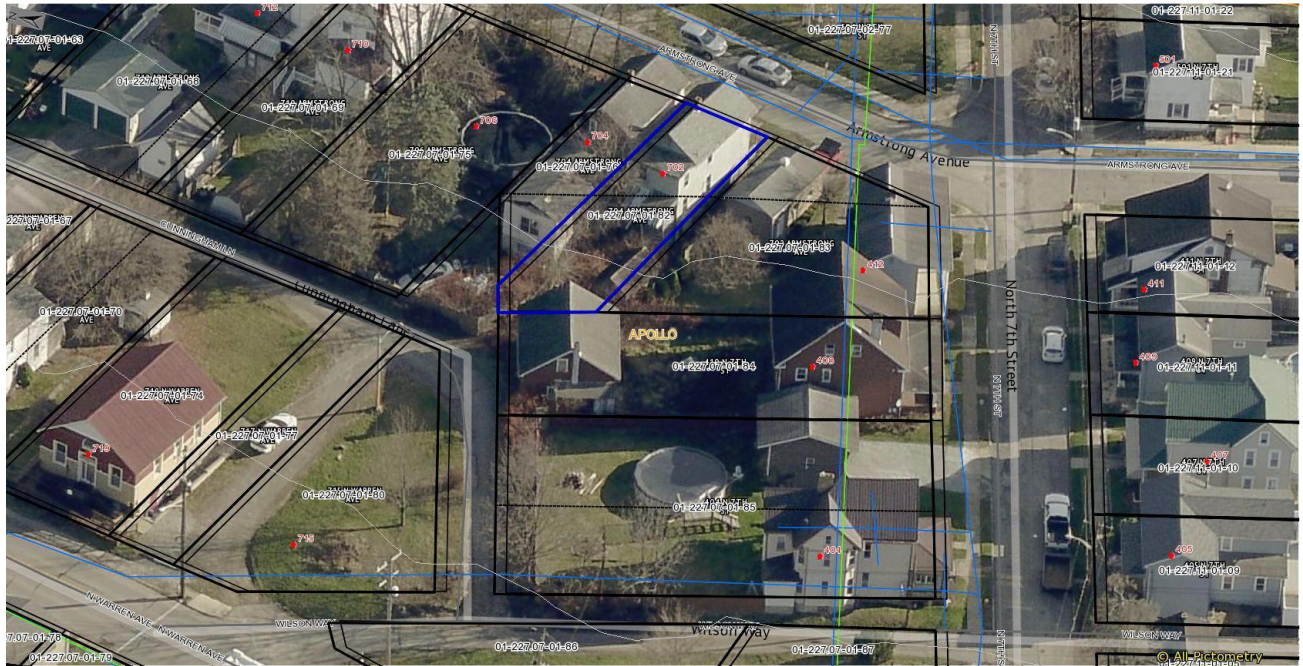


# 702 Armstrong Avenue, Apollo, PA 15613



\*Structure to be demolished

Parcel Number	01-227.07-01-82
Municipality	Apollo Borough
Lot Size	Acreage: 0.048
Zoned	Residential

For more information, please contact Brigid Beatty, Program Manager

[bmbeatty@co.armstrong.pa.us](mailto:bmbeatty@co.armstrong.pa.us)

724-548-3719